



# Company Overview

**"Things should be made as simple as possible, but no simpler"**  
*Albert Einstein*



BrainCube is a provider of consulting services and integrated software solutions. It was founded in 2006 by a team of highly specialized and experienced people from the Banking sector. Collectively the team has a wealth of knowledge and expertise in IT, which is essential in order to provide innovative and total solutions that increase the commercial value of any kind of business information.

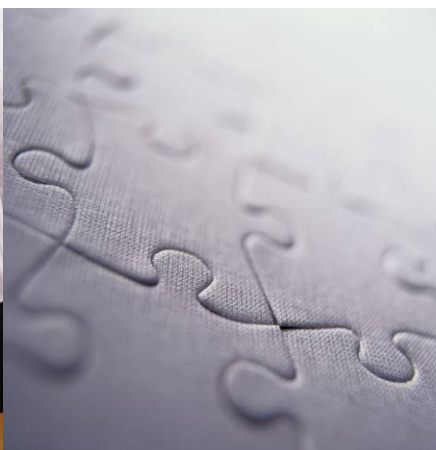
Responding to today's ever-changing challenges, BrainCube's technology know-how enables the design of reliable systems that fully meet the requirements of any modern organization and ensures the long-term performance of investments in an environment marked by constant change. Investing in new technologies, BrainCube's solutions meet the growing needs of its customers.

## Our Goal

Successful business today depends upon a company's ability to quickly adapt to changes in the marketplace. At BrainCube, we pride ourselves on our knowledge of the dynamic networking market that is quickly becoming central to modern business. Through our continued pursuit of new product ideas and by consistently refining our products and solutions, we want to become a technology leader and one of the top providers of cutting-edge software products in the market.

Our goal is to develop successful, long-term partnerships where our services integrate with your specific technical needs. We work individually with you the client, to make sure our work fits your specific needs.

As the information age unfolds, BrainCube is the company you should turn to for the most effective solutions. BrainCube will provide high quality solutions in a minimum timeframe, with solid customer support that is excellent value for money. Choosing BrainCube makes sense.

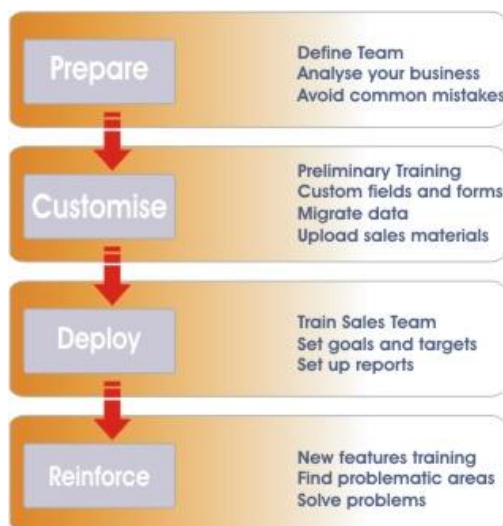


## Consulting & Software Services

Our experienced consultants use proven methodologies to deliver strategic business and technology related solutions.

We provide our clients with consulting services in the following areas:

- Banking & Financial Solutions
- Business Process Management (BPM) and Process Automation & Optimization
- Service Oriented Architecture (SOA) Design
- Gap Analysis and Process Review, Testing
- Technical and Integration Architecture
- Personnel Outsourcing
- Enterprise Application Integration (EAI)
- B2B & B2C workshops
- Project Management Services
- Training & Educational Services



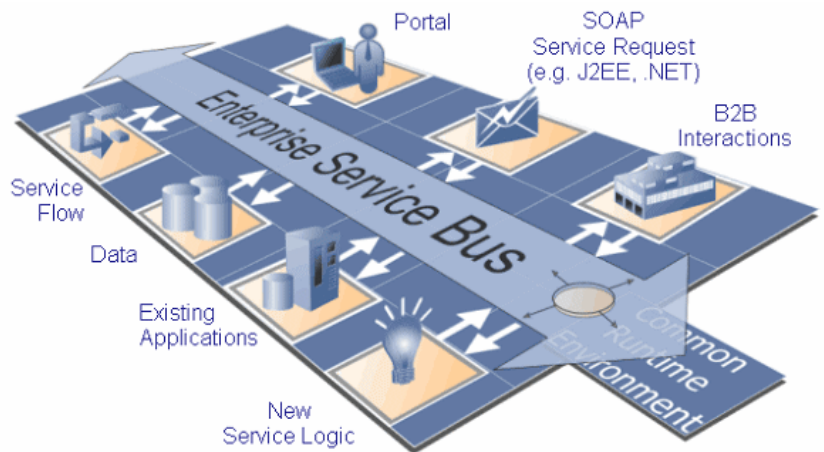
Additionally, we provide our clients with services spanning the full software development lifecycle, including:

- Feasibility studies, conceptual and technical whitepapers
- Requirements Gathering, Elaboration and Design
- Technical Requirements Definition
- Architectural and Detailed Design
- Software Development and Implementation
- Multi-tiered Testing (incorporating System Integration, User Acceptance and Interoperability)
- Software Deployment and Release services
- Running-system support and ongoing maintenance

We can work with your personnel to define any new requirements. Our previous projects include solid examples of successful reverse engineering and design refactoring. We offer new solutions that are both robust and relevant to our clients' needs. Whether your system is mainframe or PC-based, our experienced technical personnel can help you.

## Systems Integration

Our design team is highly experienced in the field of systems integration. We have delivered robust solutions that feature a range of inter-operability technologies. Whether you need to add value to old investments through integration, to replace slices of obsolete technology from your current solutions or to minimize cost by integrating your point to point connections on one platform, BrainCube can provide a cross-platform solution that operates over a wide variety of protocols and technologies.



Solutions that BrainCube can offer, include (but not limited to):

- Unified Messaging and Enterprise Service Busses
- Enterprise Application Integration (EAI) Solutions
- Service Oriented Architecture (SOA) Solutions
- Cross-functional Application Integration
- Software as a Service (SaaS), Multi-Tenant Solutions
- Multi-Site, Multi-Channel Implementations
- Large-Scale, High Transaction Volume Systems
- Migration Services

We can provide a complete end-to-end solution or work as part of a larger team, cooperating with your other systems integrators.



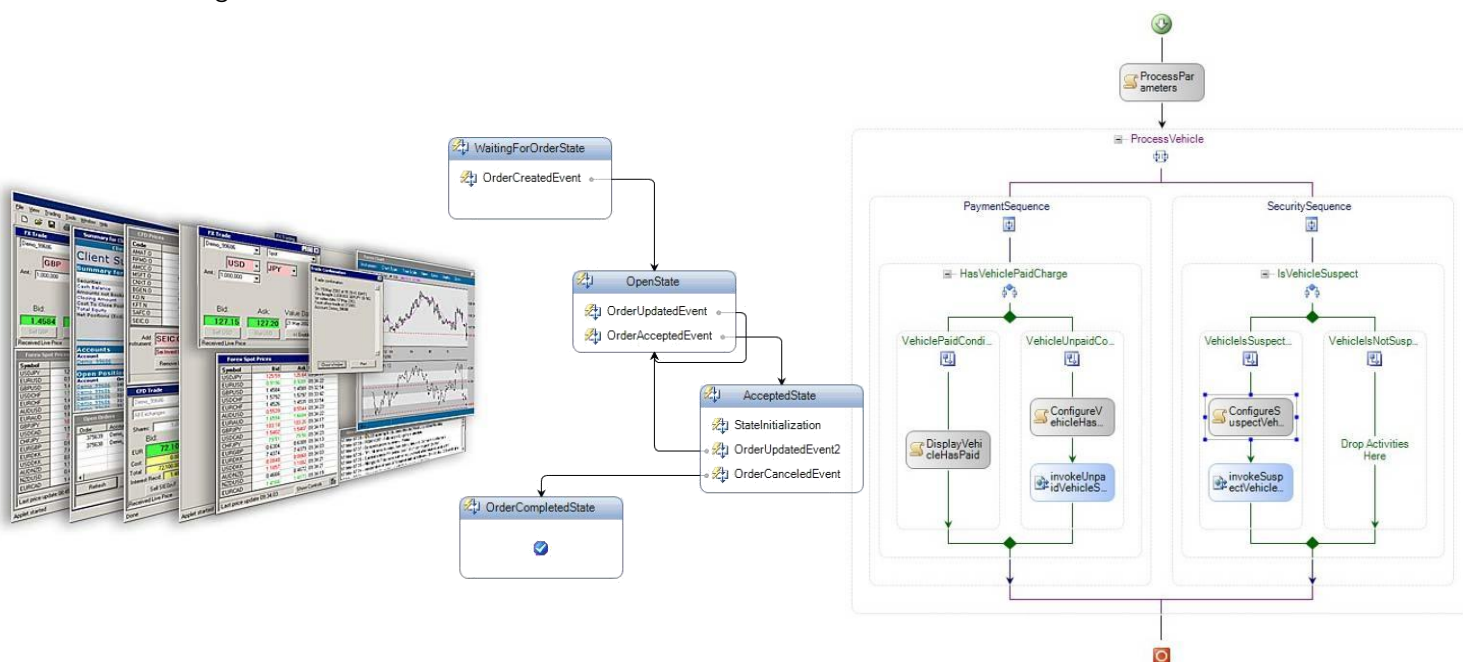
## Custom Software Application Development



We recognize the importance of close, ongoing, stable and consistent relationship with our clients. Our development approach focuses on Joint Application Development (JAD) and early prototyping techniques to assure that the requirements delivered by the solution are exactly what are needed, but within the shortest practical timeframe. Moreover, **we are taking over the implementation cost of a proof-of-concept solution** on which we base our proposal. With this approach, we minimize the risks that all new projects carry taking into account only the written requirements.

Our team has proven expertise in the following areas:

- Sophisticated Financial Applications (Investment Platforms, Portfolio Management, Asset Management, Trading Systems, Treasury & Treasury Back-Office Systems)
- Workflow-Based Banking Applications (Credit Line Approval, Cheques Management)
- Business Process Orchestration Systems
- Customer Information HUBs (Consolidated Customer Position & Reporting)
- E-Banking & Multi-Channel Platforms

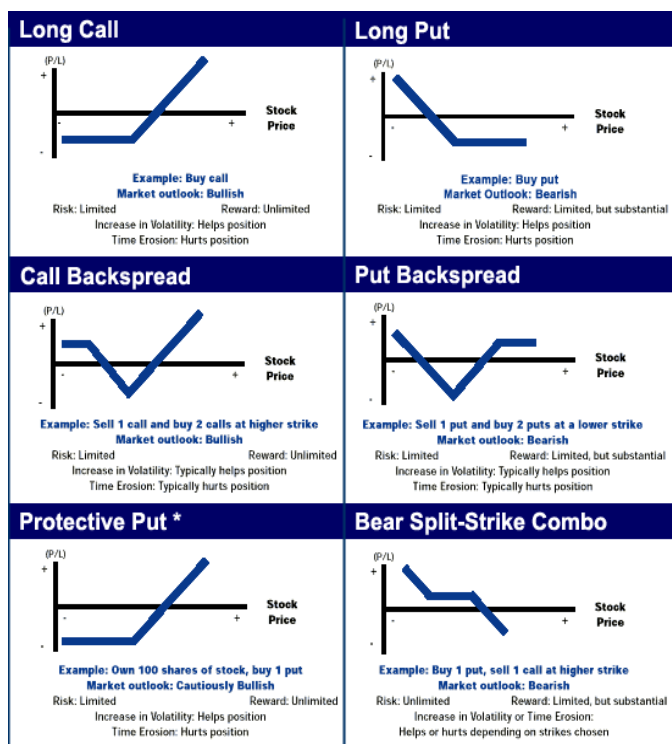


## Proven Experience

Throughout the years the portfolio of our work within the Banking sector, includes a large number of mission-critical solutions.

### Portfolio Management and Investment Products Platform

This is a total integrated solution implemented in one of the largest banks in Greece. The system supports all functions for business units ranging from retail branches to central units such as Custody, Private Banking, Treasury Back-Office and Accounting. The major business functions that are supported include: Real-time trading, Settlements/Payments, Real-time accounting & GL postings, Reporting, Real-time position blotters, Counterparties & Nostros Management, Margin Accounts, IPO's, etc. Financial instruments that are supported include: Stocks, Bonds, T-Bills, Mutual Funds, Repo's, FX deals, Money Market deals, Listed & OTC Derivatives, Structured products, Synthetics, etc. The number of users using the system is up to 4000 and the major platforms and technologies used are IBM/AS400, Windows 2003, C/C++, COBOL, RPG, DB2, MS SQL Server, C#, .NET, IIS and MSMQ.



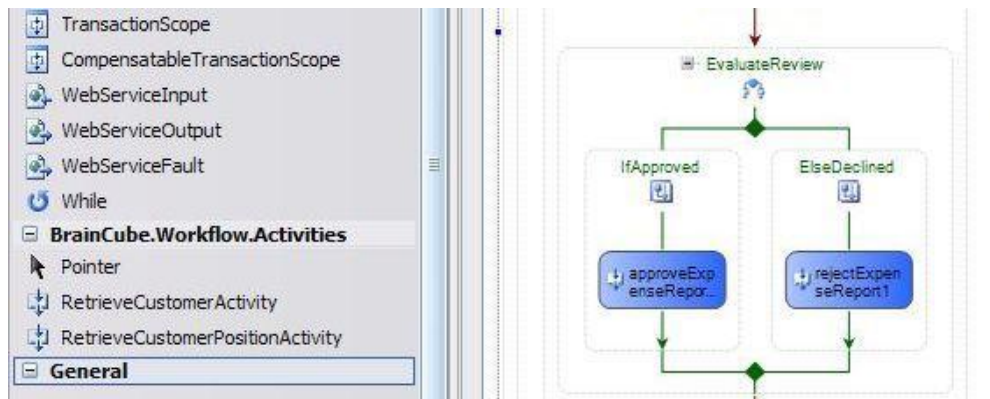
### E-Banking & Multi-Channel Platform



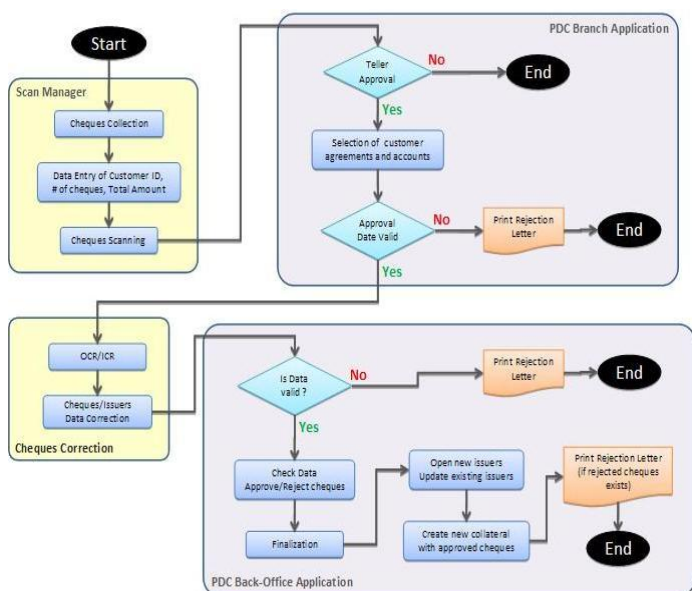
We have implemented a multi-channel platform supporting e-Banking, Phone-Banking, CRM, and other functions in a mid-sized Greek bank. The system is designed and developed with SOA in mind and it is also used as an Enterprise Service Bus (ESB) serving many third-party applications with information from the core banking system. Up to twelve third-party applications are consuming the provided services and the technologies used are Windows 2003, NLB clusters, C#, ASP.NET, IIS, MSMQ, Web Services and MS SQL Server.

## Credit-Line Approval

The solution is an online, real-time business process management application supporting the business needs of the subsidiaries banks of a major Greek financial institution. The solution is handling all the business processes for Private loans, Corporate

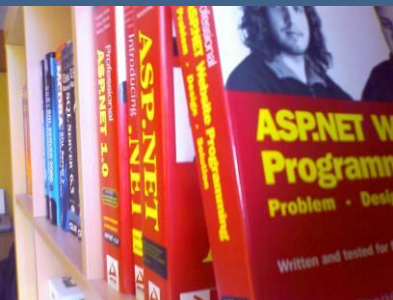


loans, Mortgage loans and Credit Cards. Noteworthy handlings of the solution are Document Management, Multiple Workflows and Multiple Scoring. The system is using open architecture, it is web enabled and is using a lot of functional and flexible interfaces with other systems inside the bank (core banking system) and outside (credit Bureau). The technologies used are Windows 2003, C#, C++, ASP, Sybase 12.5 and IIS.



## Cheques Management

The solution is fully automating the business process of managing the cheques (both normal & post-dated) in a mid-sized Greek bank. It is a typical workflow application orchestrating five different applications such as Scanning, OCR/ICR, Data Correction, Back-Office Cheques application and Collaterals subsystem. The application is used in all retail branches and in the back-office responsible for the cheques approval process. The number of users using the system is up to 800 and the technologies used are Windows 2003, Windows Workflow Foundation, C#, ASP.NET, IIS, Web Services, MS SQL Server and MSMQ.



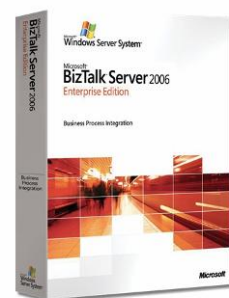
## Technologies

### Microsoft Technology Specialists

- .NET Framework
- C#.NET, VB.NET, ASP.NET, ASP.NET Web Services
- Windows Workflow Foundation (WF)
- Windows Communications Foundation (WCF)
- Windows Presentation Foundation (WPF)
- MSVC++ (including MFC, STL and ATL)
- COM/COM+/DCOM, MS Message Queues (MSMQ)
- SQL Server 2005 (including all provided services)
- Windows Server 2003 R2 (32 & 64-bit)
- Internet Information Server (IIS) 6.0 & 7.0
- BizTalk Server, Host Integration Server, SharePoint Server
- Web/Application Farms (NLB-based), Database Clusters

### Other Technologies, Systems & Tools

- IBM systems (AS400, mainframes), COBOL, RPG, DB2
- Unix/Linux Support (SuSE, RedHat, Ubuntu, Gentoo, etc)
- JBoss Application Server (J2EE, Seam, jBPM, jRules, etc)
- Oracle, MySQL and Sybase databases
- C/C++, Java, EJB3, Hibernate
- SOAP/Web Services, REST, JSON
- XML/XSD/XSLT, HTML/XHTML, BRML, BPEL
- Business Objects, Informatica



All trademarks represented by the logos in this collection are registered by their respective owners



26, Spartis Str.  
176 73, Kallithea  
Athens, Greece

Tel.: (+30) 210 9597280,2  
Fax: (+30) 210 9597244

email: [info@braincube.gr](mailto:info@braincube.gr)  
web: [www.braincube.gr](http://www.braincube.gr)